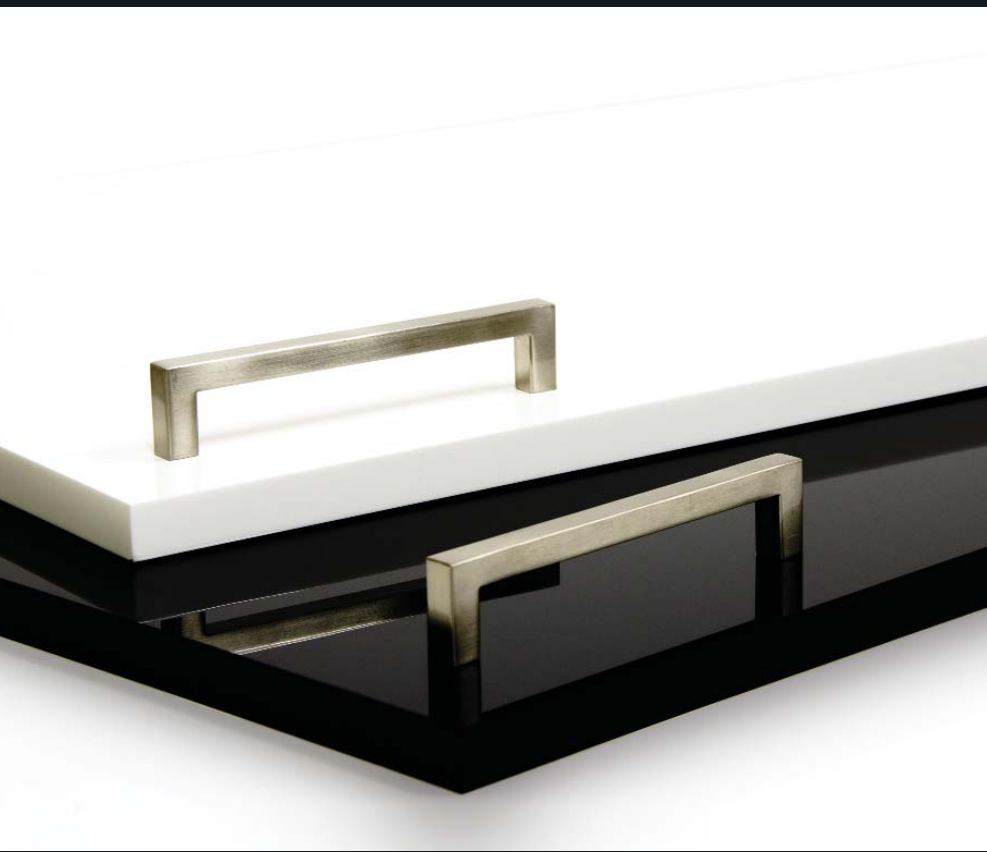


# eleganz<sup>®</sup>

High gloss solid Perspex<sup>®</sup> Doors



Eleganz<sup>®</sup> solid Perspex<sup>®</sup> acrylic doors offer style, shine, quality and constant colour right through the door.

They are ideal for your kitchen, bathroom or alfresco area.



# Eleganz® doors...

perfect for outdoor  
'alfresco' kitchens



Image courtesy of [www.akldesignerkitchens.com.au](http://www.akldesignerkitchens.com.au)

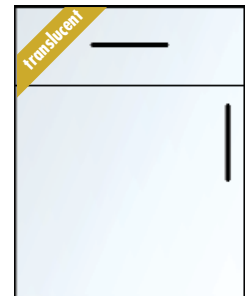
- ... are the finest quality **solid high gloss** kitchen doors & drawers in the market.
- ... are **SOLID** because they are 18mm thick **genuine Perspex®** acrylic colour all the way through, not coated or laminated.
- ... are hardwearing, durable, moisture proof and hygienic, making them ideal for the kitchen, bathrooms and **alfresco** areas.
- ... are available in 7 solid and 2 translucent colours.
- ... are ideal for **alfresco kitchens** because they are UV stable, moisture proof and backed by a **10 year guarantee\*** for both internal and external applications.
- ... are made to any size to suit your design requirements and can easily be drilled for hinges and handles.
- ... are easy to maintain with non-abrasive household cleaners. In the unlikely event of damage, scratches can be removed simply by buffing with Brasso.
- ... can be cleaned with an anti-static cleaner available from Mitchell Plastics.
- ... are available with a range of edge treatments.

# Colour range

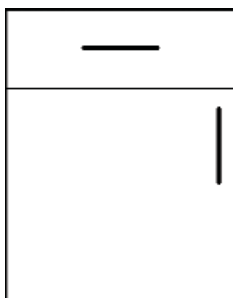
Eleganz® doors and drawers are available in a range of colours including seven solid colours and two translucent colour options. Colours shown are an illustrative guide only, final decisions should be made from actual samples. To request samples please e-mail [sales@mitchellplastics.com.au](mailto:sales@mitchellplastics.com.au) or visit our showroom.



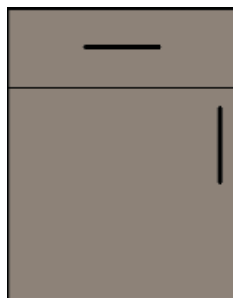
Marshmallow  
(Opal 030)



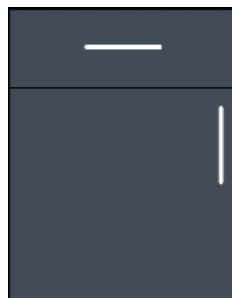
Opal Cloud  
(Opal 1T05)



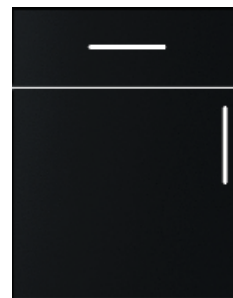
Blizzard White  
(1210)



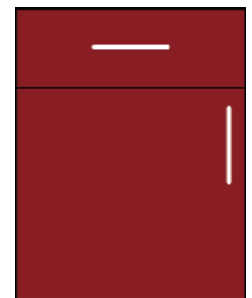
Cafe Latte  
(5263)



Shadow Grey  
(9563)



Ebony Black  
(962)



Scarlet Rose  
(4262)

# Edge Treatments

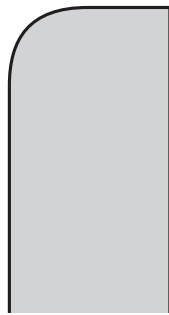
Below is a choice of edge treatments available for 18mm thick solid Perspex® Eleganz® doors. This provides an original and unique touch to your finished product.



Square  
Edge



1mm  
Radius Edge



45°  
Bevel Edge





Image courtesy of [www.akdesignerkitchens.com.au](http://www.akdesignerkitchens.com.au)

**eleganz**  
High gloss solid Perspex® Doors

High gloss 18mm thick genuine Perspex® acrylic doors & drawers.

Hardwearing, UV stable, moisture proof and hygienic.

Ideal for alfresco kitchens.

10 year guarantee\*

\*Conditions apply with guarantee. 10 year guarantee applies to Perspex® grade acrylic only and excludes hardware & fixing methods.



Image courtesy of [www.frescoframes.com.au](http://www.frescoframes.com.au)

**Also suitable for alfresco kitchen's...**



AliFrost® aluminium framed Perspex® acrylic doors.  
[www.alifrost.com.au](http://www.alifrost.com.au)



Excel® PVC Integral Free Foam board for carcasses.  
[www.mitchellplastics.com.au](http://www.mitchellplastics.com.au)



**Mitchell Plastics**

37 - 53 Crockford Street  
Port Melbourne VIC 3207  
Ph: (03) 9646 7877  
Fax: (03) 9646 7520  
[sales@mitchellplastics.com.au](mailto:sales@mitchellplastics.com.au)  
[www.mitchellgroup.com.au](http://www.mitchellgroup.com.au)

Available From: