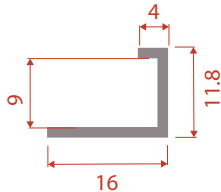
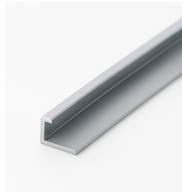


## Product

Edging Solutions are a series of specifically designed aluminium trims that complement all acoustic products including the EchoPanel® range of acoustic panels.

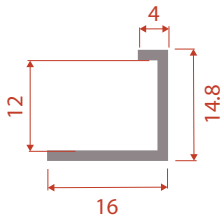
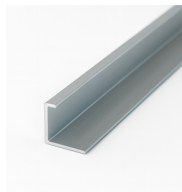
## Specification

Slim aluminium edging profiles + T Trim for all acoustic panels from thicknesses in 9, 12, 24 & 50mm.



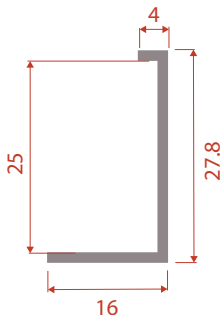
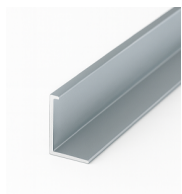
### 9mm Edging

Suitable for any embossed panels or flexible acoustic panel to 9mm thickness.



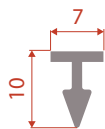
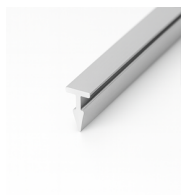
### 12mm Edging

Suitable for 12mm standard panels, V grooved, custom prints or laser etched acoustic panels thickness.



### 24/25mm Edging

Suitable for 24mm & 25mm standard panels, V grooved, custom prints or laser etched acoustic panels.



### Tee Joiner

Suitable Suitable for concealing butt joints

## Finishes



Natural Anodised (stocked)



Black (ns)



White (ns)

ns = Non stocked available finishes

## Available Lengths

3000mm