

NEW BOX
&
RECYCLED
OPTIONS

FENTE Caddy™

SUSTAINABLE, COLOURFUL, PRACTICAL.





FENTE DESK CADDY RANGE

The Fente Desk Caddy range from Mitchell Group Australia offers a practical and colourful solution for organising your workspace. This lightweight, durable caddy is perfect for laptops/tablets, mobiles, keyboards and stationery, making moving from your locker to your desk as easy as possible.

Fente / Fente Box: Made entirely from Echopanel®, in over 30 colours. Suitable for keyboards, small laptops, iPad and drink bottles.

Fente Duo / Fente Duo Box: Made from Echopanel® with a genuine PERSPEX® front panel, in over 70 colours. Suitable for keyboards, small laptops, mobiles, iPads, drink bottles. and similar items.

Fente Duo Mini: Made from Echopanel® with genuine PERSPEX® comes in 7 colours. Suitable for smaller stationery items.

SUSTAINABILITY

Working sustainably is a key element of our strategy, design and the materials we have chosen. Fente Caddy uses high quality, environmentally responsible materials including EchoPanel® and genuine PERSPEX®.

Echopanel® is an Australian made, PET product material made from 60-80% post consumer waste sourced from recycled PET bottles. Its certified Global Green Tag rating and Low VOC Emissions make it ideal for commercial offices, schools and work places. The material is light weight and can be used in creative ways, such as a practical desk caddy.



PERSPEX® is the original acrylic material, manufactured in the UK since 1933. This high quality acrylic is low VOC, non toxic (lead free) and food contact rated (ROHS compliant). Additionally, PERSPEX® is 100% recyclable, with selected colors now available in **fully (100%) recycled acrylic**. The material's unique advantage lies in its extensive range of colors, which have been precisely matched with EchoPanel®. These include solid colours, anti-fingerprint frosts, vibrant tints, and naturally glowing fluorescents, making PERSPEX® a popular choice for various applications.



T 03 95580800
E sales@mitchellgroup.com.au
w www.mitchellgroup.com.au



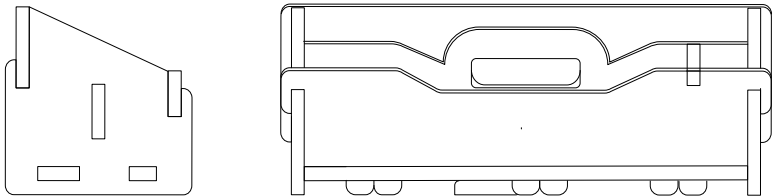
Fente 402 Pebble

FENTE

This lightweight, custom made and self-assembled Fente Caddy, is perfect for laptops/tablets mobile devices and all your stationery products. It ensures that whenever you are rostered into your workplace, you can move from your locker to your next touch point with ease.

- Made from recycled plastic bottles
- 100% PET, 60% recycled
- Australian made EchoPanel®
- Low VOC
- Easy to assemble
- Light weight (650 grams)
- Carries 10x its own weight
- Acoustic Control

Material	EchoPanel® 12mm
Size	460 w x 160 h x 175 d
Design	3 storage compartments (reversible design)
Weight	650 grams
Order Qty	10 units
Customisable	Yes (POA)



Fente 579 Pistachio

NEW RELEASE



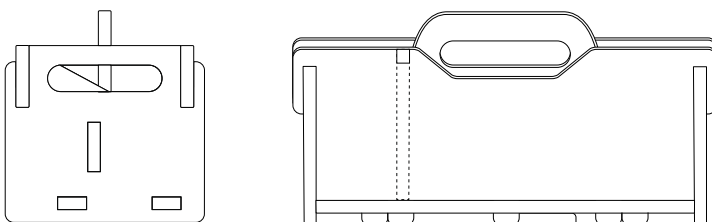
Fente Box 633 Pacific

FENTE BOX

Introducing the Fente Box Caddy, a lightweight, custom-made, self-assembled organiser designed to keep your essentials within reach. Featuring a dedicated compartment for your drink bottle, this caddy ensures you stay hydrated on the go while also providing space for your tablet, mobile devices, and stationery. Whether moving from your locker to your next workstation, the Fente Box Caddy makes your daily routine smoother and more efficient by combining convenience with excellent organisation.

- Made from recycled plastic bottles
- 100% PET, 80% recycled
- Australian made EchoPanel®
- Low VOC
- Easy to assemble
- Light weight (650 grams)
- Carries 10x its own weight
- Acoustic Control

Material	EchoPanel® 12mm
Size	400 w x 200 h x 188 d
Design	3 storage compartments (reversible design) Water bottle compartment 76 w x 142 h x 76 d
Weight	660 grams
Order Qty	9 units
Customisable	Yes (POA)



Fente Box 633 Pacific

FENTE / FENTE BOX - Colour Range

Fente / Fente Box is available in the full EchoPanel® 12mm colour range. Other brands and or colours available on request. Please check our website for full colour range and design options.

CHECK
WEBSITE FOR
FULL COLOUR
RANGE



454 Mushroom



908 Cream



101 Frost



468 Vanilla



721 Nutmeg



580 Sage



442 Grey



402 Pebble



444 Smoke



447 Slate



542 Charcoal



550 Onyx



106 Butter



124 Ochre



495 Dusk



487 Blush



295 Mandarin



167 Cinnamon



484 Cayenne



193 Rouge



269 Wine



274 Orchid



381 Lime Splice



579 Pistachio



384 Olive



573 Mint



349 Vineyard



338 Jade



330 Ivy



551 Duck Egg



633 Pacific



660 Coronet



365 Navy



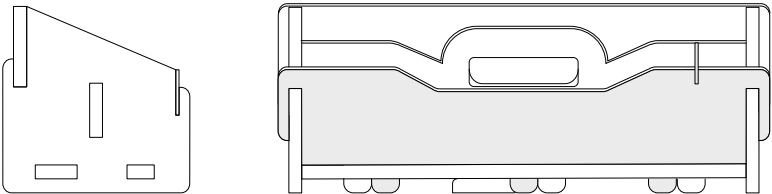
Fente Duo 580 Sage / 6T21 Glass Look

FENTE DUO

Add some wow factor with Fente Duo, which combines acoustic EchoPanel® with a genuine non toxic PERSPEX® front panel to create a truly unique range of colour caddy options. This lightweight, custom made and self-assembled Fente Duo Caddy, is perfect for laptops/tablets mobile devices and all your stationery products. It ensures that whenever you are rostered into your workplace, you can move from your locker to your next touch point with ease.

- Made from recycled plastic bottles
- PET (60-80% recycled) & Acrylic (PMMA)
- Australian made EchoPanel®
- Low VOC
- Non Toxic PERSPEX® (ROHS)
- Whiteboard marker PERSPEX®
- Easy to assemble
- Light weight (650 grams)
- Carries 10x its own weight
- Acoustic Control
- Over 70 colour options

Material	EchoPanel® 12mm & PERSPEX® 3mm
Size	460 w x 160 h x 175 d
Design	3 storage compartments (reversible design)
Weight	650 grams
Order Qty	12 units
Customisable	Yes (POA)



Fente Duo 167 Cinnamon / S2 3T27 Burnt Orange

NEW RELEASE



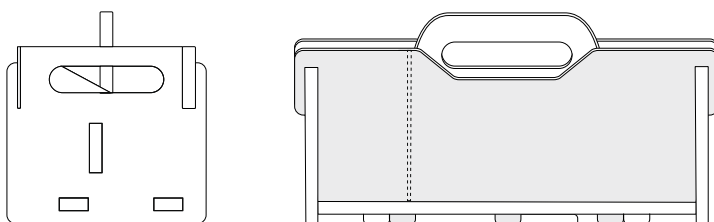
Fente Duo Box 468 Vanilla / 9T13 Neutral (Tint)

FENTE DUO BOX

Introducing the Fente Duo Box Caddy—a game-changer in organisation and style! This innovative caddy features a blend of acoustic EchoPanel® and a sleek, non-toxic PERSPEX® front panel, offering a striking array of colour options. With a dedicated compartment for your drink bottle, it ensures you stay hydrated while on the move. Plus, it provides ample space for your tablet, mobile devices, and stationery. From your locker to your next workstation, the Fente Duo Box Caddy streamlines your routine with convenience and exceptional organisation.

- Made from recycled plastic bottles
- PET (80% recycled) & Acrylic (PMMA)
- Australian made EchoPanel®
- Low VOC
- Non Toxic PERSPEX® (ROHS)
- Whiteboard marker PERSPEX®
- Easy to assemble
- Light weight (650 grams)
- Carries 10x its own weight
- Acoustic Control
- Over 70 colour options

Material	EchoPanel® 12mm & PERSPEX® 3mm
Size	400 w x 200 h x 188 d
Design	3 storage compartments (reversible design) Water bottle compartment 78 w x 142 h x 85 d
Weight	660 grams
Order Qty	11 units
Customisable	Yes (POA)



Fente Duo Box 468 Vanilla / 9T13 Neutral (Tint)

FENTE DUO / FENTE DUO BOX - Sample Colour Range

Fente Duo / Fente Duo Box is available in a wide range EchoPanel® and PERSPEX® colour combinations. Choose from PERSPEX® delicate tints, glowing fluorescents, translucent frosts and high gloss finishes. Too many colour options to show, please **check our website for the full colour range**.

CHECK
WEBSITE FOR
FULL COLOUR
RANGE



454 Mushroom w/
S2 000 Crystal Clear
(FT)



908 Cream w/
9638 Vanilla
(SC)



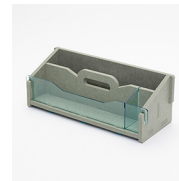
101 Frost w/
S2 9642 Ash Grey
(FS)



468 Vanilla w/
S2 5268 Desert Beige
(FS)



721 Nutmeg w/
S2 5T18 Sandstone Brown
(FS)



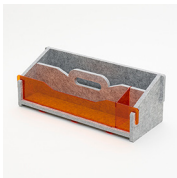
580 Sage w/
6T21 Glass look
(Tint)



580 Sage w/
S2 6T21 Glacier Green
(FT)



442 Grey w/
9981 Mist Grey
(SC)



442 Grey w/
300 Amber
(Tint)



402 Pebble w/
901 Neutral
(Tint)



402 Pebble w/
5263 Café Latte
(SC)



444 Smoke w/
901 Neutral
(Tint)



444 Smoke w/
S2 9T21 Stone Grey
(FT)



447 Slate w/
901 Neutral
(Tint)



542 Charcoal w/
962 Black
(SC)



542 Charcoal w/
069 Opal
(SC)



550 Onyx w/
S2 9221 Midnight Black
(FS)



106 Butter w/
SA 2170 Lemon Bonbon
(FS)



124 Ochre w/
2202 Yellow
(Tint)



124 Ochre w/
S2 2T53 Saffron Yellow
(FT)



487 Blush w/
3144 Peach Pink
(SC)



295 Mandarin w/
300 Amber
(Tint)



295 Mandarin w/
3T19 Lava Orange
(Fluro)



167 Cinnamon w/
S2 3T37 Burnt Orange
(FT)



193 Rouge w/
433 Red
(SC)



269 Wine w/
S2 4T97 Raspberry Red
(FT)



274 Orchid w/
4T96 Laser Pink
(Fluro)



274 Orchid w/
SA 7563 Sour Grape
(FS)



381 Lime Splice w/
6T66 Acid Green
(Fluro)



579 Pistachio w/
S2 6T9A Lime Zest
(FT)



384 Olive w/
S2 6T9A Lime Zest
(FT)



384 Olive w/
6397 Olive Green
(SC)



349 Vineyard w/
6T21 Glass Look
(Tint)



349 Vineyard w/
S2 6T21 Glacier Green
(FT)



338 Jade w/
6T21 Glass Look
(Tint)



338 Jade w/
S2 6T21 Glacier Green
(FT)



330 Ivy w/
6398 Ivy Green
(SC)



551 Duck Egg w/
7704 Blue
(Tint)



551 Duck Egg w/
S2 7T77 Arctic Blue
(FT)



633 Pacific w/
S2 7T77 Arctic Blue
(FT)



633 Pacific w/
7805 Pacific Blue
(SC)



550 Coronet w/
7T97 Neptune
(Fluro)



550 Coronet w/
S2 7T69 Electric Blue
(FT)



365 Navy w/
7T97 Neptune
(Fluro)

PERSPEX® COLOUR GUIDE


Tint Transparent

FT Frost Translucent (Anti fingermark)

FS Frost Solid non-translucent (Anti fingermark)

SC Solid Colour, high gloss finish

Fluro Fluorescent transparent tint with a vivid edge, which appears to glow under ambient light

 For approved white board markers



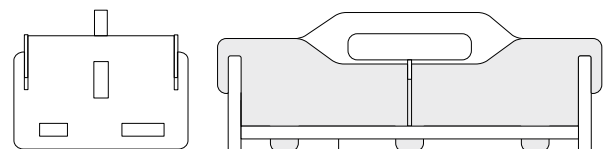
Fente Duo Mini 442 Grey / 300 Amber (Tint)

FENTE DUO MINI

Fente Duo Mini, offers a more petite desk storage solution. It combines acoustic EchoPanel® base with a genuine non toxic PERSPEX® acrylic side panels.

- Made from recycled plastic bottles
- PET (60% recycled) & Acrylic (PMMA)
- Australian made EchoPanel®
- Low VOC
- Non Toxic PERSPEX® (ROHS)
- Easy to assemble
- Light weight (500 grams)
- Carries 10x its own weight
- Acoustic Control

Material	EchoPanel® 12mm & PERSPEX® 3mm
Size	340 w x 163 h x 130 d
Design	4 storage compartments
Weight	500 grams
Order Qty	25 units
Customisable	Yes (POA)



Fente Duo Mini is available in a limited range of EchoPanel® and PERSPEX® colour combinations.



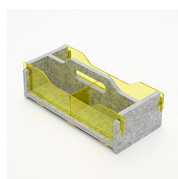
442 Grey w/
9981 Mist Grey
(SC)



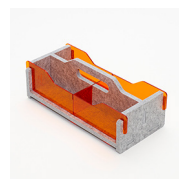
442 Grey w/
901 Neutral
(Tint)



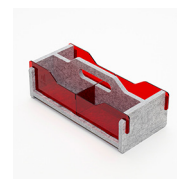
442 Grey w/
7704 Blue
(Tint)



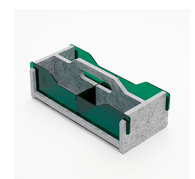
442 Grey w/
2202 Yellow
(Tint)



442 Grey w/
300 Amber
(Tint)



442 Grey w/
4401 Red
(Tint)



442 Grey w/
6600 Green
(Tint)

GO GREEN AT YOUR DESK

Available
November
2024

Our Most Recycled, Sustainable, and Non-Toxic Desk Caddy is Here!



FENTE DUO

442 Grey w/ 9981 Mist Grey



FENTE DUO BOX

442 Grey w/ 9981 Mist Grey

Working sustainably is easier with our selected* Fente caddy range, made from **100%** recycled **PERSPEX®** acrylic and Echopanel®, composed of **60-80%** post-consumer waste from PET bottles. **PERSPEX®** is low VOC, non-toxic, and ROHS compliant, while **EchoPanel®** is Australian-made with a Global Green Tag rating, ensuring safety and environmental responsibility.

**Currently only stocked in Grey 442 and Mist Grey 9981 colours, other colours available on application.*

FENTE AT WORK

Show your staff that you care with our range of Fente Caddy custom options. From corporate branding, custom colours and extra dividers we offer numerous ways to customise your desk caddy.



Fente 580 Sage

ETCHED BRANDING

Have your logo outline laser etched. Available on Fente only Not recommended for dark colours i.e. 542, 550, 365 etc



Fente Duo 542 Charcoal / 962 Black

ENGRAVED BRANDING

Have your logo laser engraved. Suitable for more detailed logos. Available on Fente Duo and Fente Duo Mini.



Fente Duo 550 Onyx / 1212 White

CUT BRANDING

Have your logo laser cut. Suitable for simple logo designs Available on Fente Duo and Fente Duo Mini.



Fente 551 Duck Egg & 633 Pacific Blue

MIX & MATCH DESIGN

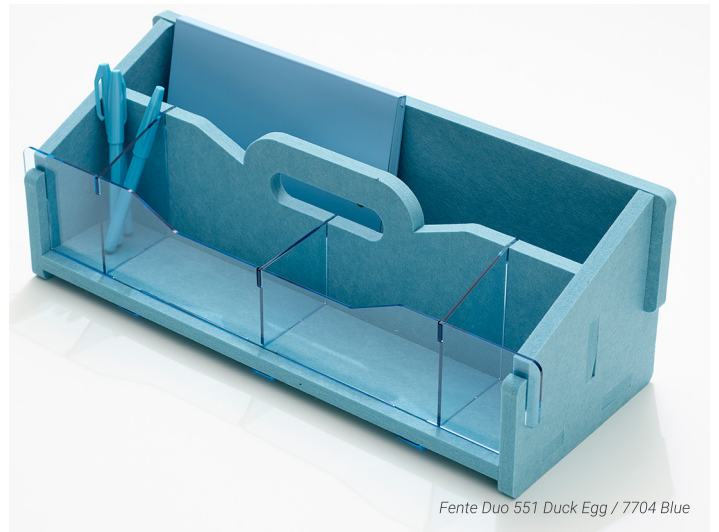
Fente has been designed so you can mix and match two colour options. Purchase Fente in two separate colours and mix the colours to create your own design.

FENTE AT WORK

Show your staff that you care with our range of Fente Caddy custom options. From corporate branding, custom colours and extra dividers we offer numerous ways to customise your desk caddy.



Fente Sage 580



Fente Duo 551 Duck Egg / 7704 Blue

ADDITIONAL DIVIDERS

We can customised the quantity and size of our dividers to suit specific storage items. We can also design specific size caddys to your needs.



Fente Duo 550 Onyx / 1212 White

WHITEBOARD FRIENDLY

Fente Duo options with selected PERSPEX® fronts are whiteboard marker approved, so your staff can personalise their own caddy.