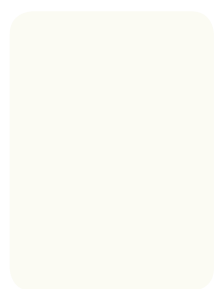




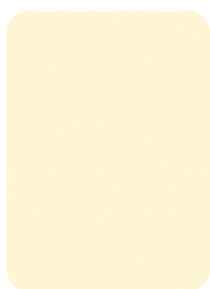
EUROPA™ LAMINATES

FORMICA® EUROPA™ laminates offer classic looks for international interior style. While ideal for benchtops in kitchens, bathrooms and laundries, this practical range can also be used for vertical applications. Designs include a wide variety of realistic stone patterns, new solid colours and woodgrain prints. Colours have been specifically chosen together with a range of relevant and popular surface finishes to enhance overall appearance and appeal. The range boasts AR+® finish with a superior gloss level and scuff resistance. Formica Europa is also backed by a 7 year limited warranty. So now you can easily achieve contemporary European looks with Formica.

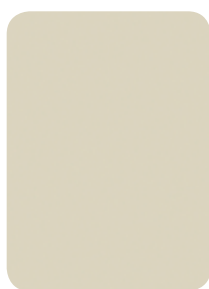
COLOURS



Crystal White



Porcelana



Pumicestone



Storm



Graphite



New Burgundy



Tropical Blue



Chrome Yellow



Carnaval





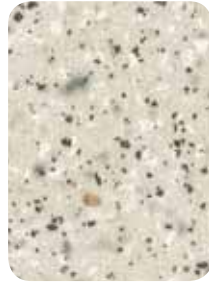
Ice Quarstone
AR+ R



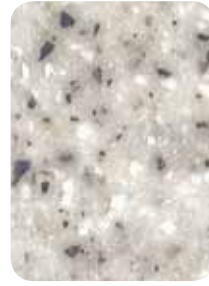
White Quartz
AR+ E



White Kashmir
AR+ E



Coran
C



Millstar Cream
AR+ SM



Bernini
AR+



Cream Artstone
AR+



Venetian Gold Granite
R



Italico Crema
AR+



Amber Artstone
AR+



Travertine
AR+ E



Maple Woodline
N



Butterum Granite
AR+ E



Cocoa Marble
AR+ E



Jamocha Granite
AR+ E



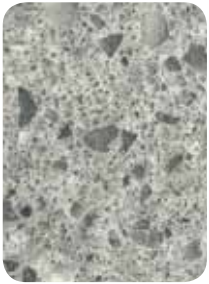
Tourmalet
AR+ C



Burnt Strand
V



Ebony Wood
N



Grey Artstone
AR+



Cosmopolitan Concrete
R



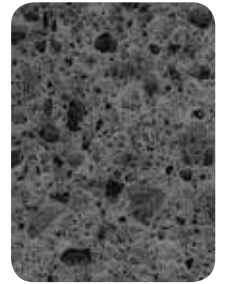
Perlato Granite
AR+ E



Ubatuba Granite
E



Green Marble
AR+



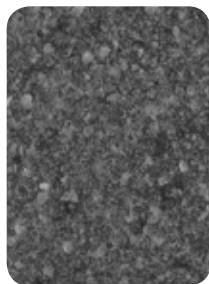
Anthracite Artstone
AR+



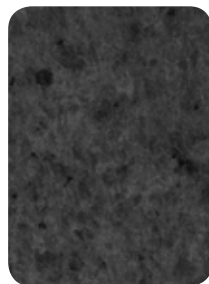
Inari Granite
AR+ C



Italico Nero
AR+



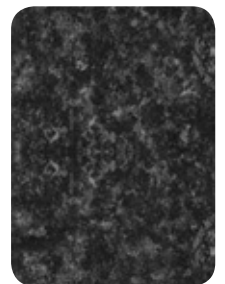
Smoke Quarstone
R



Grey Kashmir
AR+ E



Basalt Slate
E H



Bulnes
AR+ C

AR+ = AR+ High Gloss

C = Crystal

E = Etchings

H = Honed

N = Naturelle

R = Riverwash

SM = Seda Matt

V = Velour



Formica stockist



Mitchell Laminates

32-38 Redwood Drive

Dingley VIC 3172

Telephone (03) 9558 0800

Facsimile (03) 9558 0557

sales@mitchelllaminates.com.au

formica.com.au

Formica Melamine Doors are manufactured, marketed and distributed by Laminex Group Pty Limited ABN 98 004 093 092, trading as Laminex. The colours and finishes of the products featured within the imagery in this brochure are as close to Formica Melamine Doors as photographic lighting and our printing processes allow. Different camera angles, although not designed to be misleading, can sometimes distort actual size and distances. Formica Melamine Doors are no different than any other material in that darker colours will always show scratches and superficial wear and tear more readily than lighter colours. Formica Melamine Doors should be protected from strong, direct sunlight as continuous exposure may cause discolouration or fading to the surface. Please obtain a copy of the terms and conditions of Formica Melamine Doors 7 year limited warranty from formica.com.au. This warranty is in addition to any rights that may exist under the Australian Consumer Law.

Formica