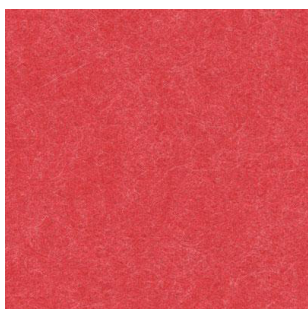




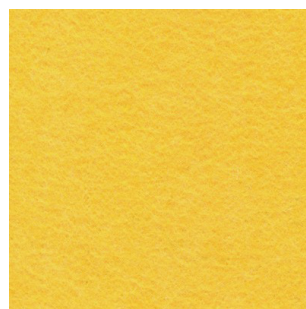
EchoPanel® Mura



258



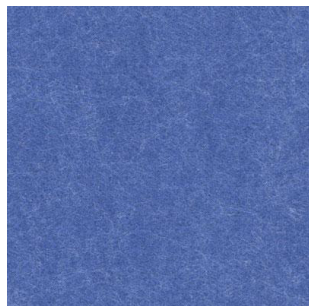
151



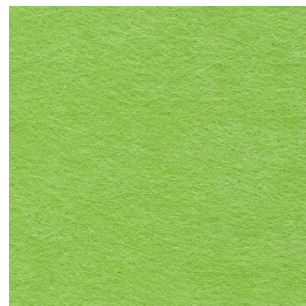
108



542



273



361



444



442



402



454



908

For information



Mitchell Laminates
32-38 Redwood Drive
Dingley Vic 3172
Ph +61 3 9558 0800
Fax +61 3 9558 0557
sales@mitchelllaminates.com.au

EchoPanel® Mura

Specifications

Design Name:	EchoPanel® Mura
Designer:	Woven Image
Colours:	11
Composition:	100% PET (60% recycled)
Width:	1210mm
Weight:	423.5g/lin.m, 350g/m ²
Fabric Protection:	Available on request
Piece length:	Approx 25m roll

Performance

Colour Fastness to Light:	ISO 105 B02 Rating: 6
Fire Test:	AS3837 Classification: Group 1 BS476 Part 7: Class 2 ASTM E84: Class 1
Fabric Care:	See additional care instructions
Use:	
VOC Emissions:	ASTM D5116 Rate: < 0.02mg/m ² /hr (7 days)
Environmental:	



EchoPanel®Mura



454



442

EchoPanel®Mura Otto



Otto 177



Otto 390



Otto 328

EchoPanel®Mura Biline



Biline 454



Otto 447



Otto 141

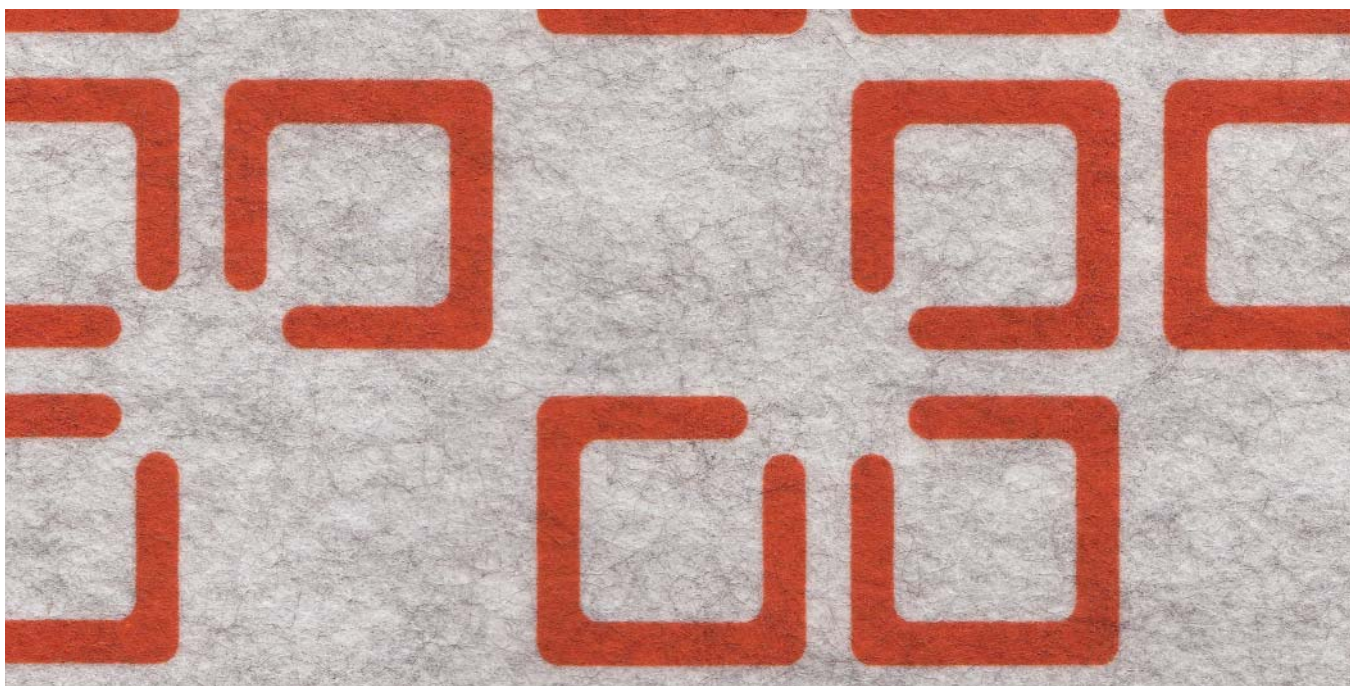


Otto 468

NB: Designs shown to scale. Stock may vary due to the fibre mix and lay up which is an inherent feature of **EchoPanel®Mura**.



EchoPanel® Mura Quattro



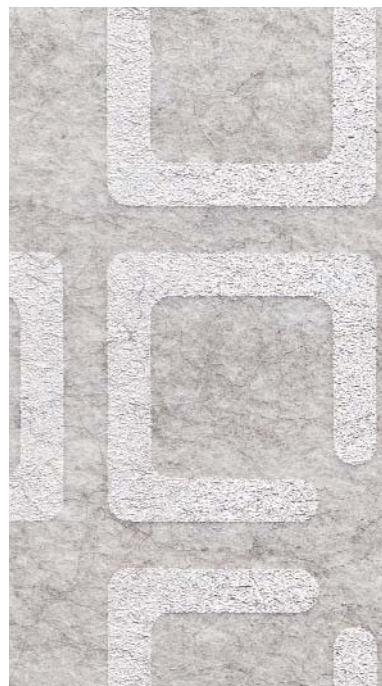
Quattro 177



Quattro 447



Quattro 470



Quattro 468

NB: Designs shown to scale. Stock may vary due to the fibre mix and lay up which is an inherent feature of **EchoPanel® Mura**.

EchoPanel®Mura

WHAT IS ECHOPANEL®MURA?

EchoPanel®Mura is an innovative wall covering that is design driven, cost effective and easy to install. It contains 60% post consumer recycled content with a low VOC.

EchoPanel®Mura is 1.9mm thick, which contributes to added acoustic properties. The face side has been designed to create a smooth clean designer look whilst the back has been engineered with a forgiving texture that can be adhered to a variety of surfaces. **EchoPanel®Mura** delivers an enriched finish that challenges the perception of traditional wall covering.

KEY APPLICATIONS

EchoPanel®Mura is designed as a wall covering for sustainable interiors used in:

- commercial offices
- hotels
- restaurants
- retail
- education
- apartments
- residential
- cinemas, theatres and auditoriums

EchoPanel®Mura is ideal as:

- an added acoustic floor to ceiling wall covering
- a workstation screen fabric
- an operable wall / partition cover

KEY BENEFITS

Easy installation.

EchoPanel®Mura is light weight, easy to handle, adhere and install.

We recommend a professional wall covering installer for optimum results.

For an application guide and "how to" video visit wovenimage.com

Seamless finish.

When double cut the texture of **EchoPanel®Mura** allows seams to become almost invisible as the fine fibres of **EchoPanel®Mura** interlock on a micro scale. Available as a continuous 25m roll, **EchoPanel®Mura** is ideal for high floor to ceiling installations.

Flexible Design.

EchoPanel®Mura is a surface in itself with significant design potential to enable designers and manufacturers to redefine, reinvent and reconfigure interior spaces.

Cost Effective.

Compared to other wall finishes **EchoPanel®Mura** is an extremely price competitive solution.

Flame Resistance.

AS 3837: Group 1
(adhered to plasterboard)

BS 476 Part 7: Class 2
(adhered to Gyprock EC08™ Fire)

ASTM E84: Class 1
(adhered to Gyprock EC08™ Fire)

Improved Interiors.

EchoPanel®Mura has acoustic benefits tested by RMIT to AS ISO 354-2006. It also achieves outstanding commercial performance results against Australian and International standards.

Ideal Print And Emboss Surface.

EchoPanel®Mura is available printed in an array of colourways and designs. It is also available embossed providing a subtle textured result. The perfect solution for adding contemporary design to an interior space.

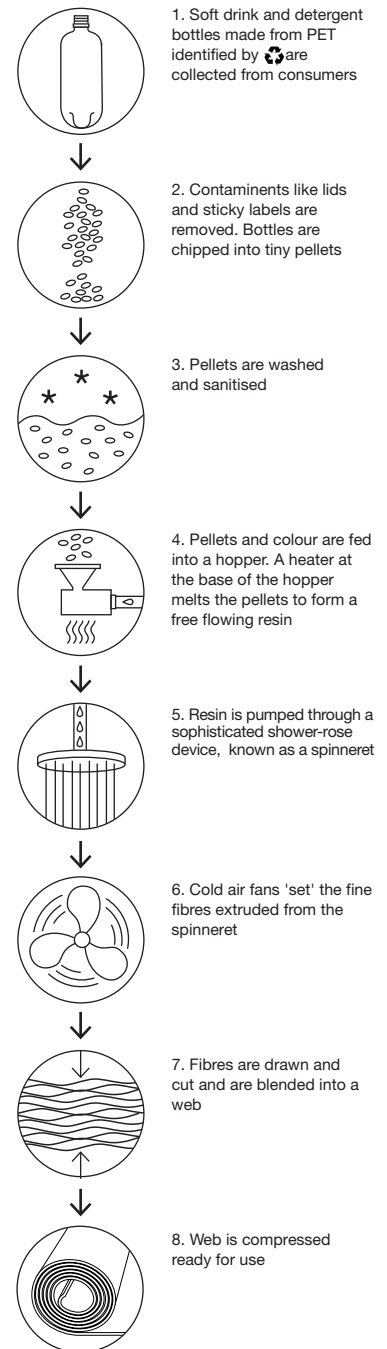
ENVIRONMENTALLY SUSTAINABLE

EchoPanel®Mura is another landmark product from Woven Image. It demonstrates our ongoing commitment to environmental performance and sustainable interiors.

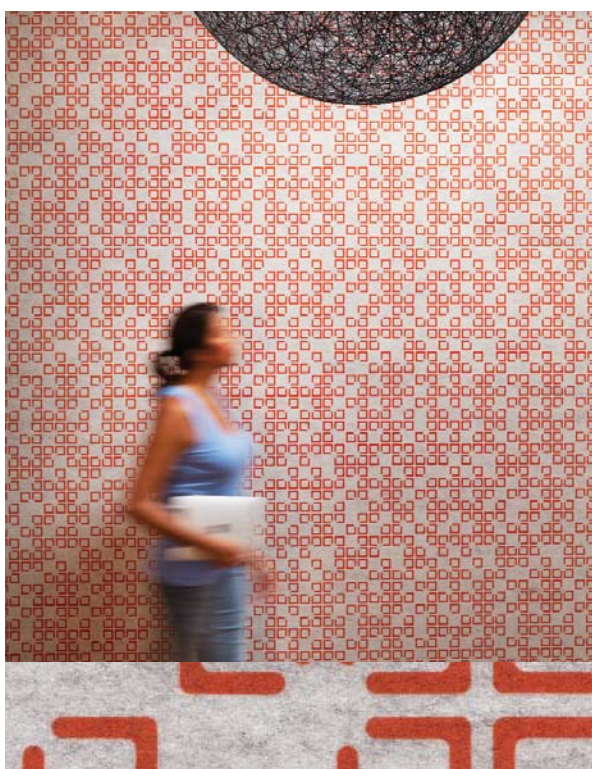
EchoPanel®Mura is a low VOC product made from recycled and recyclable PET (approximately 60% post consumer waste such as recycled PET bottles). The base fibre is certified to Oeko-tex Standard 100 for meeting human-ecological requirements, recognised by TESTex Zurich, Swiss Textile Institute. **EchoPanel®Mura** is manufactured in a way that no waste is created. Source fibre that is not transformed into useful product is collected and re-used ie. post-industrial recycling.

Woven Image has an Environmental Management System in place to guide and facilitate ongoing environmental monitoring, review and improvement. Woven Image has implemented a Carbon Management and Reduction Plan to proactively reduce climate change impacts resulting from its products and services.

For environmental credentials see wovenimage.com



EchoPanel® Mura



NB: Designs shown to 50% scale.

For information









Mitchell Laminates
32-38 Redwood Drive
Dingley Vic 3172
Ph +61 3 9558 0800
Fax +61 3 9558 0557
sales@mitchelllaminates.com.au

Echo Panel® Mura

Specifications

Design Name	Echo Panel® Mura Biline	Echo Panel® Mura	Echo Panel® Mura Otto	Echo Panel® Mura Quattro
Designer	Woven Image	Woven Image	Woven Image	Woven Image
Colours	1	2	6	4
Composition	100% PET (60% recycled)	100% PET (60% recycled)	100% PET (60% recycled)	100% PET (60% recycled)
Width	121cm	121cm	121cm	121cm
Weight	423.5g/lin.m, 350g/m ²	423.5g/lin.m, 350g/m ²	423.5g/lin.m, 350g/m ²	423.5g/lin.m, 350g/m ²
Thickness	1.9mm +/- 0.25mm	1.9mm +/- 0.25mm	1.9mm +/- 0.25mm	1.9mm +/- 0.25mm
Pattern Repeat	Embossed Vertical Stripe Horizontal Repeat: 29.5cm	N/A	Vertical: 2cm, Horizontal: 1.5cm	Vertical: 75cm, Horizontal: 58cm
Piece Length	25m	25m	25m	25m

Performance

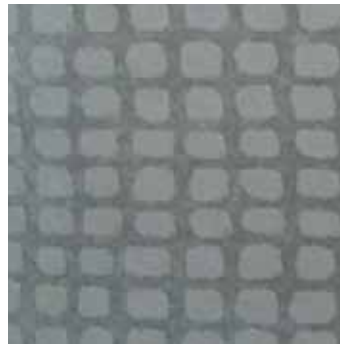
Colour Fastness To Light	ISO 105 B02 Rating: 6	ISO 105 B02 Rating: 6	ISO 105 B02 Rating: 6	ISO 105 B02 Rating: 6
Colour Fastness To Rubbing	ISO 105-X12 Rating: Wet: 5, Dry: 5	ISO 105-X12 Rating: Wet: 5, Dry: 5	ISO 105-X12 Rating: Wet: 5, Dry: 5	ISO 105-X12 Rating: Wet: 5, Dry: 5
Fire Test	AS3837 Classification: Group 1 (adhered to plasterboard) BS476 Part 7: Class 2 (adhered to Gyprock EC08™ Fire) ASTM E84: Class 1 (adhered to Gyprock EC08™ Fire)	AS3837 Classification: Group 1 (adhered to plasterboard) BS476 Part 7: Class 2 (adhered to Gyprock EC08™ Fire) ASTM E84: Class 1 (adhered to Gyprock EC08™ Fire)	AS3837 Classification: Group 1 (adhered to plasterboard) BS476 Part 7: Class 2 (adhered to Gyprock EC08™ Fire) ASTM E84: Class 1 (adhered to Gyprock EC08™ Fire)	AS3837 Classification: Group 1 (adhered to plasterboard) BS476 Part 7: Class 2 (adhered to Gyprock EC08™ Fire) ASTM E84: Class 1 (adhered to Gyprock EC08™ Fire)
Acoustics	AS/ISO 354 2006 NRC Value: 0.1 See website for details	AS/ISO 354 2006 NRC Value: 0.1 See website for details	AS/ISO 354 2006 NRC Value: 0.1 See website for details	AS/ISO 354 2006 NRC Value: 0.1 See website for details
Fabric Care	See website for details	See website for details	See website for details	See website for details
Use				
VOC Emissions	ASTM D5116 Rate: < 0.02mg/m ² /hr (7 days)	ASTM D5116 Rate: < 0.02mg/m ² /hr (7 days)	ASTM D5116 Rate: < 0.02mg/m ² /hr (7 days)	ASTM D5116 Rate: < 0.02mg/m ² /hr (7 days)
Environmental	See website for details	See website for details	See website for details	See website for details
				



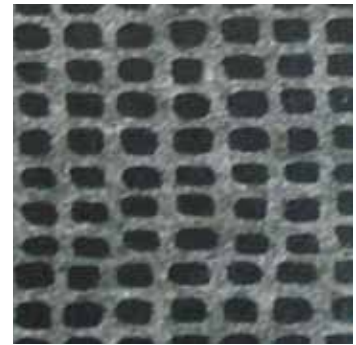
Woven Image®
+ *Akira*



EP Mura Kome 500



EP Mura Haku 447



EP Mura Haku 554



EP Mura Nami 440



EP Mura Nami 500



For Information

Mitchell Laminates
32-38 Redwood Drive
Dingley Vic 3172
Ph +61 3 9558 0800
Fax +61 3 9558 0557
sales@mitchelllaminates.com.au

Specifications

Design Name	EchoPanel * Mura Kome	EchoPanel * Mura Haku	EchoPanel * Mura Nami
Designer	Akira Isogawa	Akira Isogawa	Akira Isogawa
Colours	1	2	2
Composition	100% PET (60% recycled)	100% PET (60% recycled)	100% PET (60% recycled)
Dimensions	1210mm +/-5mm x 25m x 1.9mm +/-0.25mm	1210mm +/-5mm x 25m x 1.9mm +/-0.25mm	1210mm +/-5mm x 25m x 1.9mm +/-0.25mm
Weight	423.5g/lin.m, 350g/m ² +/-10%	423.5g/lin.m, 350g/m ² +/-10%	423.5g/lin.m, 350g/m ² +/-10%
Pattern Repeat	H: 14.5cm, V: 20cm See wovenimage.com for pattern match and application guide.	H: 14.5cm, V: 20cm See wovenimage.com for pattern match and application guide.	H: 116cm, V: 72cm See wovenimage.com for pattern match and application guide.
Minimum Order	25m (1 box)	25m (1 box)	25m (1 box)

Performance

Colour Fastness to Light	ISO 105-B02 Rating: 6	ISO 105-B02 Rating: 6	ISO 105-B02 Rating: 6
Colour Fastness to Rubbing	ISO 105-X12 Rating: Wet: 5, Dry: 5	ISO 105-X12 Rating: Wet: 4, Dry: 4/5	ISO 105-X12 Rating: Wet: 5, Dry: 5
Fire Test	AS3837 Classification: Group 1 BS476 Part 7: Class 2 (adhered to Gyprock EC08™ Fire) ASTM E84: Class 1	AS3837 Classification: Group 1 BS476 Part 7: Class 2 (adhered to Gyprock EC08™ Fire) ASTM E84: Class 1	AS3837 Classification: Group 1 BS476 Part 7: Class 2 (adhered to Gyprock EC08™ Fire) ASTM E84: Class 1
Acoustics	AS/ISO 354 2006, NRC Value: 0.10	AS/ISO 354 2006, NRC Value: 0.10	AS/ISO 354 2006, NRC Value: 0.10
Fabric Care	See wovenimage.com for care instructions.	See wovenimage.com for care instructions.	See wovenimage.com for care instructions.
Use			
Environmental			